

## ANALYZE

## COMMON USE



Analyze Rating ●●●●●●●●●●

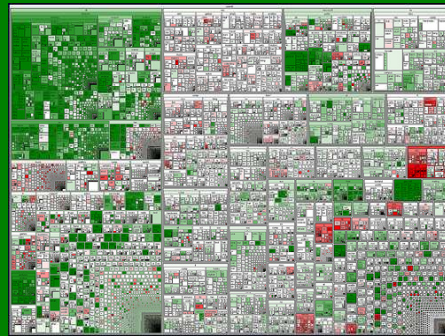
- + Computer Matrix Perception (Simple Action)
- + Firewall Detect Hacking on the Fly attempt or Probing success (no action)

v1.4

pavao.org/shadowrun

## BROWSE

## COMMON USE



Browse Rating ●●●●●●●●●●

- + Data Search Data mining (Extended test, variable threshold, Complex Action)

v1.4

pavao.org/shadowrun

## COMMAND

## COMMON USE



Command Rating ●●●●●●●●●●

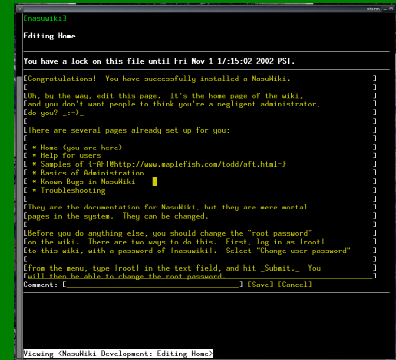
- + (Skill) Control a device remotely via the Matrix.

v1.4

pavao.org/shadowrun

## EDIT

## COMMON USE



Edit Rating ●●●●●●●●●●

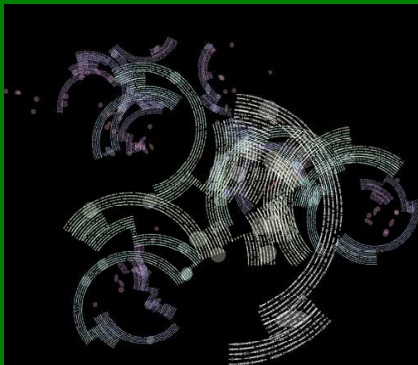
- + Computer Edit file or device output (Complex Action)
- + Computer Ongoing editing of streaming data (Simple Action each Initiative Phase)

v1.4

pavao.org/shadowrun

## ENCRYPT

## COMMON USE



Encrypt Rating ●●●●●●●●●●

- + Computer Dynamic encryption: Opposed Test vs. Decrypt + Electronic Warfare, each net hit increases

v1.4

pavao.org/shadowrun

## REALITY FILTER

## COMMON USE



Reality Filter Rating ●●●●●●●●●●

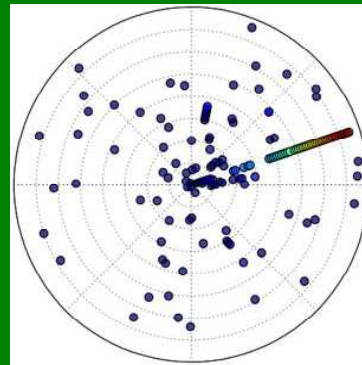
- + Response Filter sculpting (opposed test vs. System + Response) for +1 or -1 Response in node

v1.4

pavao.org/shadowrun

## SCAN

## COMMON USE



Scan Rating ●●●●●●●●●●

- + Electronic Warfare Find node in crowded area (variable, 1 Combat Turn)
- + Electronic Warfare Find known hidden node (4) (Complex action)
- + Electronic Warfare Find unknown hidden node (15+) (Complex action)
- + Data Search Find a specific node among known nodes in an area.

v1.4

pavao.org/shadowrun

## ARMOR

## HACKING



Armor Rating ●●●●●●●●●●

- + System Resist Matrix damage.

v1.4

pavao.org/shadowrun

## ATTACK

## HACKING



### Attack

### Rating



+ Cybercombat Make an attack on an entity in the same node (Opposed with Response + Firewall)

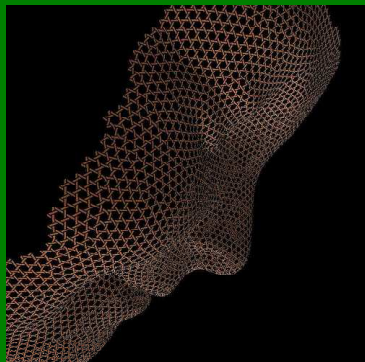
+ Rating Agent/IC/sprite attack.

v1.4

pavao.org/shadowrun

## BIOFEEDBACK FILTER

## HACKING



### Biofeedback Filter

### Rating



+ Willpower Resist damage from black IC programs

+ Willpower Resist damage from dumpshock

+ Willpower Escape black IC with an Opposed Test vs IC Rating + Response

+ Willpower Resist damage from being jumped into a drone or vehicle that takes damage

v1.4

pavao.org/shadowrun

## BLACK HAMMER

## HACKING



### Black Hammer

### Rating



+ Cybercombat Attack VR user (Opposed Test vs Response + Stealth) and jam connection open  
Causes Physical damage to hot-sim users, Stun damage to cold-sim users.

v1.4

pavao.org/shadowrun

## BLACKOUT

## HACKING



### Blackout

### Rating



+ Cybercombat Attack VR user (Opposed Test vs Response + Stealth) and jam connection open  
Causes Stun damage to VR users.

v1.4

pavao.org/shadowrun

## DATA BOMB

## HACKING



### Data Bomb

### Rating



Attach a data bomb to a file or node (p. 231, SR44)

A data bomb inflicts a number of boxes of Matrix damage equal to (1D6) x Rating when activated

v1.4

pavao.org/shadowrun

## DECRYPT

## HACKING



### Decrypt

### Rating



+ Electronic Warfare Break encryption with Extended Test (Encryption rating x 2, Complex Action)

After the first Complex Action, this program takes over for the user, using her Electronic Warfare

v1.4

pavao.org/shadowrun

## DEFUSE

## HACKING



### Defuse

### Rating



+ Hacking Disarm a data bomb with an Opposed Test vs (Data Bomb rating x 2)

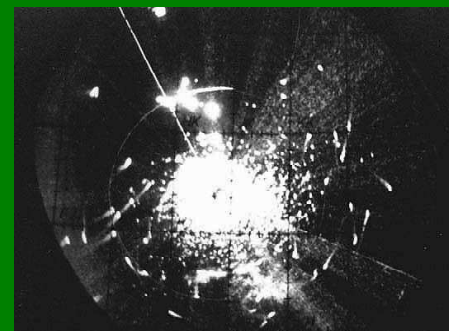
Failure activates the data bomb.

v1.4

pavao.org/shadowrun

## ECCM

## HACKING



### ECCM

### Rating



Adds rating to Signal when defending against jamming

Adds rating to dice pool when defending against jamming on the fly

v1.4

pavao.org/shadowrun

# EXPLOIT

# HACKING

```
Starting Nmap 4.20 ( http://insecure.org ) at 2007-08-11 01:11 CST
Interesting ports on mail.osaka-itkaikei.ac.jp (202.218.154.52):
Not shown: 1676 closed ports
PORT      STATE SERVICE
21/tcp    open  ftp
25/tcp    open  smtp
53/tcp    open  domain
80/tcp    open  http
110/tcp   open  pop3
111/tcp   filtered rpcbind
112/tcp   filtered mcidas
137/tcp   filtered netbios-ns
136/tcp   filtered netbios-dgm
139/tcp   filtered netbios-ssn
161/tcp   filtered snmp
162/tcp   filtered snmptrap
343/tcp   filtered unknown
443/tcp   open  https
445/tcp   filtered microsoft-ds
587/tcp   open  submission
995/tcp   open  pop3s
1728/tcp  filtered H.323/Q.931
2049/tcp  filtered nfs
3306/tcp  filtered mysql
6881/tcp  filtered bittorrent-tracker

Nmap finished: 1 IP address (1 host up) scanned in 131.220 seconds
```

Exploit	Rating
+ Hacking	Hack on the fly with a Complex Action and Extended Test (Firewall, 1 Initiative Pass)
+ Hacking	Probe target with Extended Test (System + Firewall, 1 hour in VR or 1 day in AR)
+ Hacking	Crash a program with Opposed Test vs. Firewall + System (Complex Action)
+ Hacking	Crash a node with an Extended Test (Firewall + System, Complex Action)

# MEDIC

# HACKING



Medic	Rating
+ Computer	Repair all Matrix damage to an icon, Extended Test (damage taken x 2, Complex Action)

# SNIFFER

# HACKING



Sniffer	Rating
+ Hacking	Intercept traffic from a hacked node, hits are Threshold for detection (Complex Action)
+ Hacking	Insert fake traffic from hacked node, Opposed Test vs System + Firewall (Complex Action)
+ Electronic Warfare	Capture wireless signals, Threshold 3
+ Data Search	Find a particular piece of information in a captured wireless stream

# SPOOF

# HACKING



Spoofer	Rating
+ Hacking	Spoofer commlink's access ID, threshold 2,
+ Hacking	Redirect active trace with Opposed Test vs Computer + Track, net hits increase threshold
+ Hacking	Spoofer a command to a device with Opposed Test vs Pilot + Firewall or System + Firewall

# STEALTH

# HACKING



Stealth	Rating
	Threshold for discovery in hacking attempts
+ Hacking	Icon opposes Matrix perception tests.
+ Firewall	Node opposes Matrix perception tests.
	Rating is dice pool penalty to trace attempts.

# TRACK

# HACKING



Track	Rating
+ Computer	Find originating node location with Extended Test (10, Complex Action). Wired nodes are located, wireless located to within 50 meters, may monitor movement.