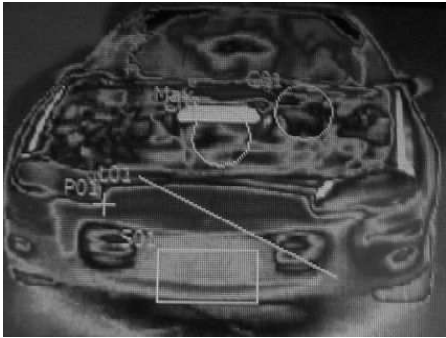


## ANALYZE

COMMON USE



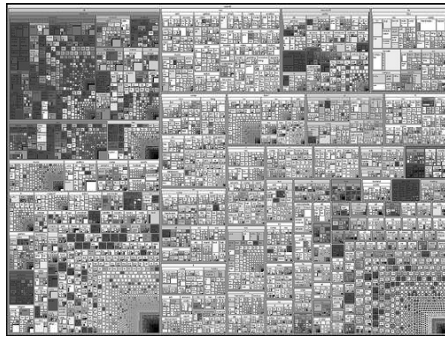
Analyze Rating ○ ○ ○ ○ ○ ○ ○ ○

- + Computer Matrix Perception (Simple Action)
- + Firewall Detect Hacking on the Fly attempt or Probing success (no action)

v1.4 pavao.org/shadowrun

## BROWSE

COMMON USE



Browse Rating ○ ○ ○ ○ ○ ○ ○ ○

- + Data Search Data mining (Extended test, variable threshold, Complex Action)

v1.4 pavao.org/shadowrun

## COMMAND

COMMON USE



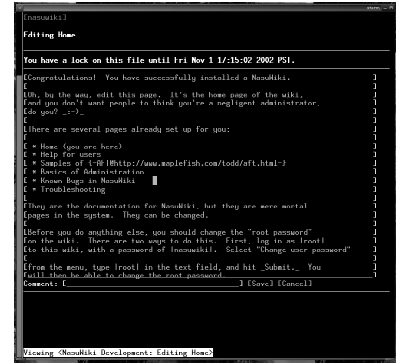
Command Rating ○ ○ ○ ○ ○ ○ ○ ○

- + (Skill) Control a device remotely via the Matrix.

v1.4 pavao.org/shadowrun

## EDIT

COMMON USE



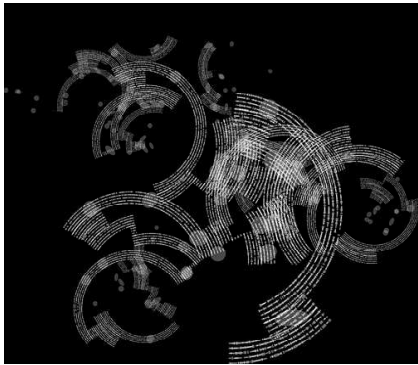
Edit Rating ○ ○ ○ ○ ○ ○ ○ ○

- + Computer Edit file or device output (Complex Action)
- + Computer Ongoing editing of streaming data (Simple Action each Initiative Phase)

v1.4 pavao.org/shadowrun

## ENCRYPT

COMMON USE



Encrypt Rating ○ ○ ○ ○ ○ ○ ○ ○

- Used as a Threshold (Rating x 2) for Extended Tests
- + Computer Dynamic encryption: Opposed Test vs. Decrypt + Electronic Warfare, each net hit increases

v1.4 pavao.org/shadowrun

## REALITY FILTER

COMMON USE



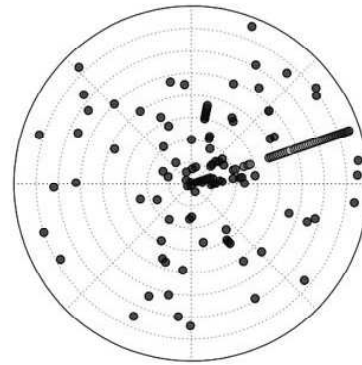
Reality Filter Rating ○ ○ ○ ○ ○ ○ ○ ○

- + Response Filter sculpting (opposed test vs. System + Response) for +1 or -1 Response in node

v1.4 pavao.org/shadowrun

## SCAN

COMMON USE



Scan Rating ○ ○ ○ ○ ○ ○ ○ ○

- + Electronic Warfare Find node in crowded area (variable, 1 Combat Turn)
- + Electronic Warfare Find known hidden node (4) (Complex action)
- + Electronic Warfare Find unknown hidden node (15+) (Complex action)
- + Data Search Find a specific node among known nodes in an area.

v1.4 pavao.org/shadowrun

## ARMOR

HACKING



Armor Rating ○ ○ ○ ○ ○ ○ ○ ○

- + System Resist Matrix damage.

v1.4 pavao.org/shadowrun

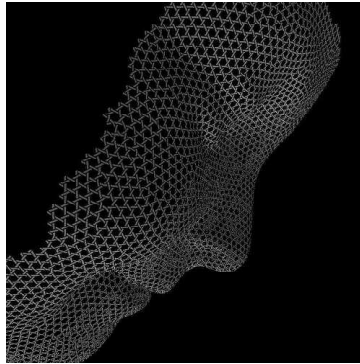
**ATTACK****HACKING**

Attack Rating ○ ○ ○ ○ ○ ○ ○ ○

+ Cybercombat Make an attack on an entity in the same node (Opposed with Response + Firewall)

+ Rating Agent/IC/sprite attack.

v1.4 [pavao.org/shadowrun](http://pavao.org/shadowrun)

**BIOFEEDBACK FILTER****HACKING**

Biofeedback Filter Rating ○ ○ ○ ○ ○ ○ ○ ○

+ Willpower Resist damage from black IC programs

+ Willpower Resist damage from dumpshock

+ Willpower Escape black IC with an Opposed Test vs IC Rating + Response

+ Willpower Resist damage from being jumped into a drone or vehicle that takes damage

v1.4 [pavao.org/shadowrun](http://pavao.org/shadowrun)

**BLACK HAMMER****HACKING**

Black Hammer Rating ○ ○ ○ ○ ○ ○ ○ ○

+ Cybercombat Attack VR user (Opposed Test vs Response + Stealth) and jam connection open

Causes Physical damage to hot-sim users, Stun damage to cold-sim users.

v1.4 [pavao.org/shadowrun](http://pavao.org/shadowrun)

**BLACKOUT****HACKING**

Blackout Rating ○ ○ ○ ○ ○ ○ ○ ○

+ Cybercombat Attack VR user (Opposed Test vs Response + Stealth) and jam connection open

Causes Stun damage to VR users.

v1.4 [pavao.org/shadowrun](http://pavao.org/shadowrun)

**DATA BOMB****HACKING**

Data Bomb Rating ○ ○ ○ ○ ○ ○ ○ ○

Attach a data bomb to a file or node (p. 231, *SR4A*)

A data bomb inflicts a number of boxes of Matrix damage equal to (1D6) x Rating when activated

v1.4 [pavao.org/shadowrun](http://pavao.org/shadowrun)

**DECRYPT****HACKING**

Decrypt Rating ○ ○ ○ ○ ○ ○ ○ ○

+ Electronic Warfare Break encryption with Extended Test (Encryption rating x 2, Complex Action)

After the first Complex Action, this program takes over for the user, using her Electronic Warfare

v1.4 [pavao.org/shadowrun](http://pavao.org/shadowrun)

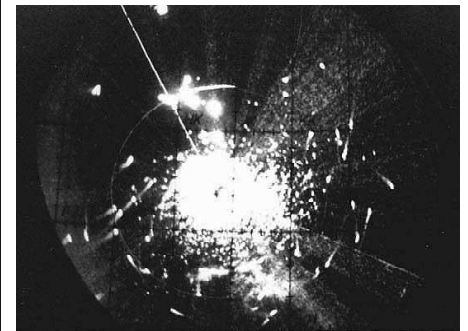
**DEFUSE****HACKING**

Defuse Rating ○ ○ ○ ○ ○ ○ ○ ○

+ Hacking Disarm a data bomb with an Opposed Test vs (Data Bomb rating x 2)

Failure activates the data bomb.

v1.4 [pavao.org/shadowrun](http://pavao.org/shadowrun)

**ECCM****HACKING**

ECCM Rating ○ ○ ○ ○ ○ ○ ○ ○

Adds rating to Signal when defending against jamming

Adds rating to dice pool when defending against jamming on the fly

v1.4 [pavao.org/shadowrun](http://pavao.org/shadowrun)

**EXPLOIT HACKING**

```
Starting Nmap 4.20 ( http://insecure.org ) at 2007-08-11 01:11 CST
Interesting ports on mail.osaka-itkaikei.ac.jp (202.218.154.52):
Not shown: 1676 closed ports
PORT      STATE SERVICE
21/tcp    open  ftp
25/tcp    open  smtp
53/tcp    open  domain
80/tcp    open  http
110/tcp   open  pop3
111/tcp   filtered rpcbind
112/tcp   filtered mcidas
137/tcp   filtered netbios-ns
136/tcp   filtered netbios-dgm
139/tcp   filtered netbios-ssn
161/tcp   filtered snmp
162/tcp   filtered snmptrap
343/tcp   filtered unknown
443/tcp   open  https
447/tcp   filtered microsoft-nds
587/tcp   open  submission
995/tcp   open  pop3s
1728/tcp  filtered H.323/Q.931
2049/tcp  filtered nfs
3306/tcp  filtered mysql
6881/tcp  filtered bittorrent-tracker

Nmap finished: 1 IP address (1 host up) scanned in 131.220 seconds
```

- Exploit Rating ○ ○ ○ ○ ○ ○ ○ ○ ○ ○
- + Hacking Hack on the fly with a Complex Action and Extended Test (Firewall, 1 Initiative Pass)
  - + Hacking Probe target with Extended Test (System + Firewall, 1 hour in VR or 1 day in AR)
  - + Hacking Crash a program with Opposed Test vs. Firewall + System (Complex Action)
  - + Hacking Crash a node with an Extended Test (Firewall + System, Complex Action)

**MEDIC HACKING**



- Medic Rating ○ ○ ○ ○ ○ ○ ○ ○ ○ ○
- + Computer Repair all Matrix damage to an icon, Extended Test (damage taken x 2, Complex Action)

**SNIFFER HACKING**



- Sniffer Rating ○ ○ ○ ○ ○ ○ ○ ○ ○ ○
- + Hacking Intercept traffic from a hacked node, hits are Threshold for detection (Complex Action)
  - + Hacking Insert fake traffic from hacked node, Opposed Test vs System + Firewall (Complex Action)
  - + Electronic Warfare Capture wireless signals, Threshold 3
  - + Data Search Find a particular piece of information in a captured wireless stream

**SPOOF HACKING**



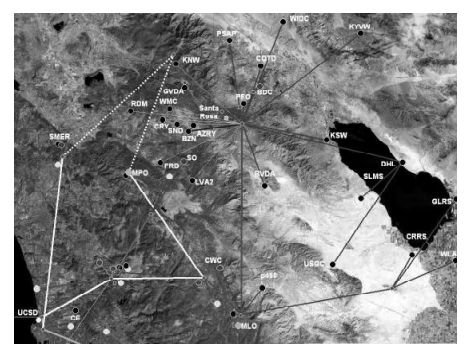
- Spoof Rating ○ ○ ○ ○ ○ ○ ○ ○ ○ ○
- + Hacking Spoof commlink's access ID, threshold 2,
  - + Hacking Redirect active trace with Opposed Test vs Computer + Track, net hits increase threshold
  - + Hacking Spoof a command to a device with Opposed Test vs Pilot + Firewall or System + Firewall

**STEALTH HACKING**



- Stealth Rating ○ ○ ○ ○ ○ ○ ○ ○ ○ ○
- Threshold for discovery in hacking attempts
  - + Hacking Icon opposes Matrix perception tests.
  - + Firewall Node opposes Matrix perception tests.
- Rating is dice pool penalty to trace attempts.

**TRACK HACKING**



- Track Rating ○ ○ ○ ○ ○ ○ ○ ○ ○ ○
- + Computer Find originating node location with Extended Test (10, Complex Action).  
Wired nodes are located, wireless located to within 50 meters, may monitor movement.